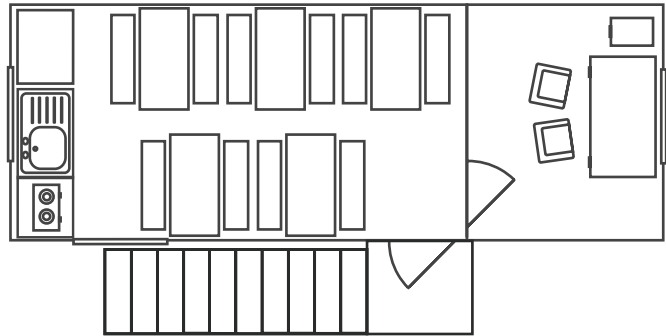
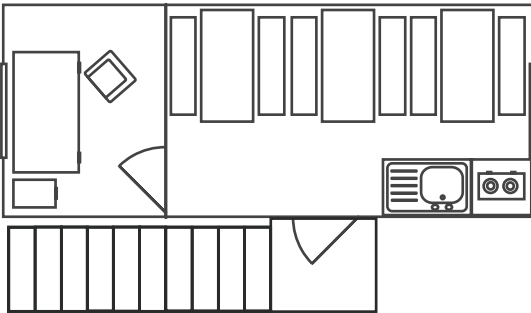


# Linking & Stacking Options

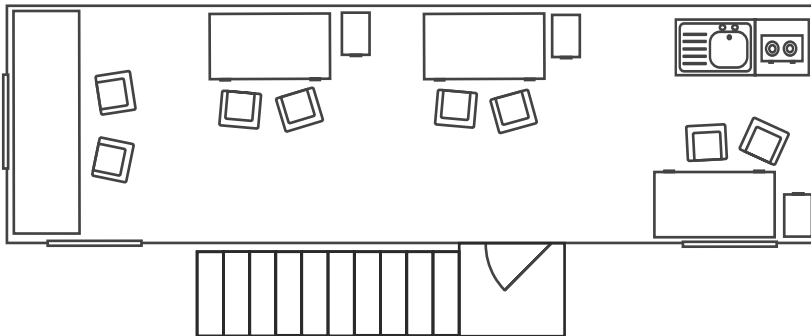


- No extra stacking & stair erection charges*
- Only pay for stair rental & stair delivery*
- High quality galvanised steel staircase*
- Linking available on 30'x9' units*
- Level ground required to stack and link*

**20'x8' or 24'x9' Office / Canteen stacked on either the same size accommodation unit or 20'x8' Container**



**30'x9' Office stacked on either 30'x9' accommodation unit or 30'x8' Container**



**30'x9' Offices linked & stacked on either 30'x9' accommodation units or 30'x8' Containers**

